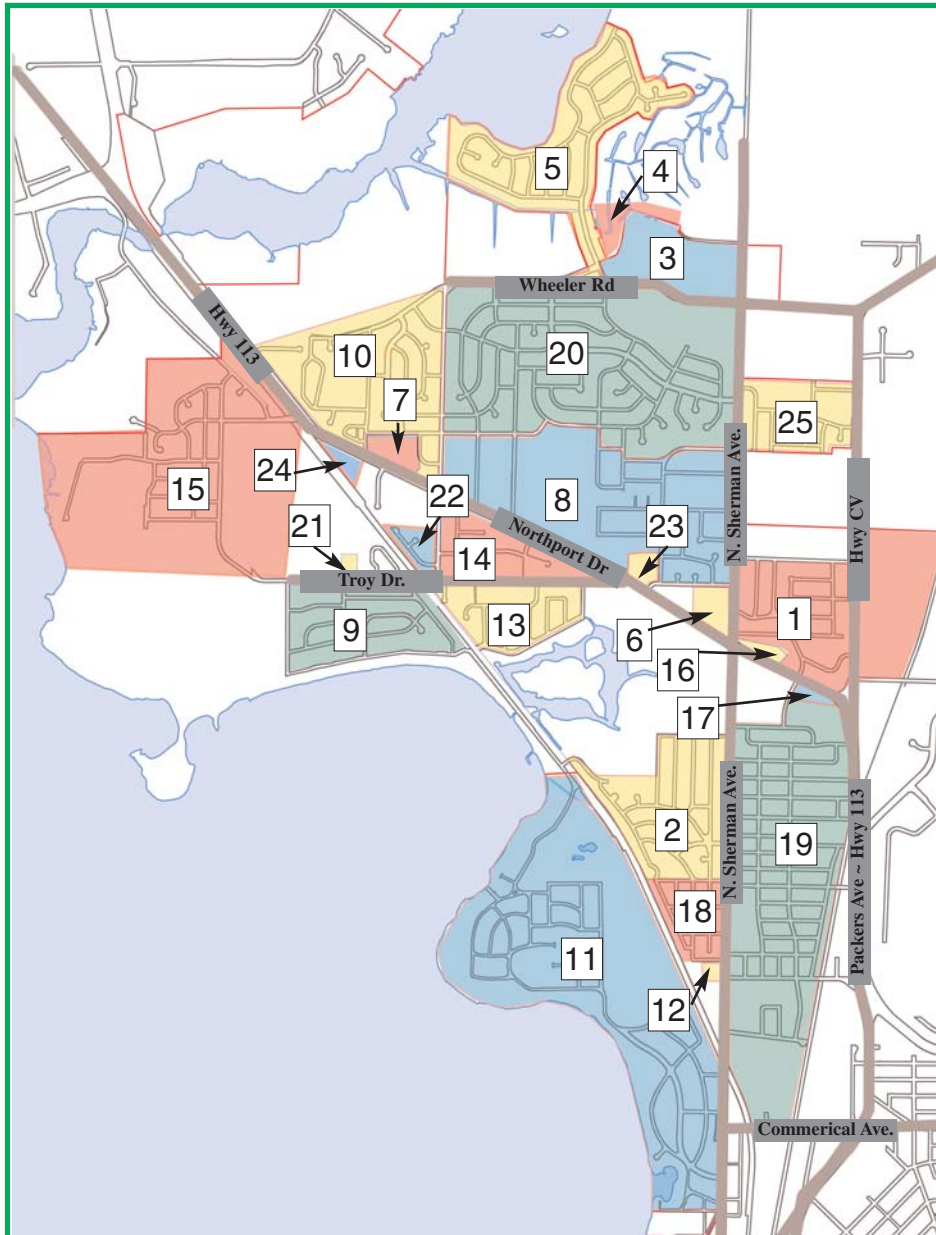


**Special  
Pull-Out  
Section**  
save for  
future reference

# 2007 Northside Neighborhood Guide

*Gateway to better neighborhoods: get involved, meet your neighbors!*



## Northside Neighborhoods

- |                        |                          |
|------------------------|--------------------------|
| 1. Berkley Oaks        | 14. Nobel Park           |
| 2. Brentwood Village   | 15. North Lake Mendota   |
| 3. Cherokee Gardens    | 16. Northport Apartments |
| 4. Cherokee Townhouses | 17. Packer Townhouses    |
| 5. Cherokee Park       | 18. Sheridan Triangle    |
| 6. East Bluff          | 19. Sherman              |
| 7. Kennedy Heights     | 20. Sherman Village      |
| 8. Lake View Hill      | 21. Troy Gardens         |
| 9. Lerdahl Park        | 22. Vera Court           |
| 10. Lindbergh          | 23. Woodland Park        |
| 11. Maple Bluff        | 24. Woodlands            |
| 12. Maple Wood         | 25. Whitetail Ridge      |
| 13. Mendota Hills      |                          |

## Individual Northside Organization Profiles

### 1. Berkley Oaks

Please see next page for the Neighborhood Spotlight on Berkley Oaks.

### 2. Brentwood Village

The Brentwood Village Association was established in 1958 and is one of the Northside's oldest neighborhood associations. It includes over 200 homes and 50 apartment buildings in the area south of Warner Park, west of North Sherman Avenue and north of MacPherson Street. Membership is extended to all residents, businesses, community organizations and landlords within the geographical area. The association has a board of nine members, holds quarterly meetings at Warner Park Community Recreation Center, operates several yearly social and community service events, and publishes a quarterly newsletter. Contact Gil Gonzales, President, at 244-8231.

### 3. Cherokee Gardens

The Cherokee Garden Condominium Homes Association was organized in 1976 and now includes 570 condominium homes. The association's efforts have led to extended bus service and road improvements in their area. Boundaries are Wheeler Road, N. Sherman Avenue, Comanche Way, Golf Parkway, and Golf Course Road. The Association is governed by an elected board of directors whose responsibility it is to administer the by-laws of the association. The board meets monthly to address current issues and future plans. The condominium association meets annually to hear the board report on the state of the association and to elect new board members. Contact Mary Jo Rimkus, Board President, at 246-9111.

### 4. Cherokee Townhouses

The Cherokee Townhouses and Garden Condominiums had their beginnings in 1974. Today there are 57 townhouse condominium units. The condo association, Cherokee Townhouse Condominium Homes, Inc. was founded in 1975, has monthly board meetings and an annual meeting. Contact John Kanvik at 245-1868.

### 5. Cherokee Park

Organized in 1994, Cherokee Park Neighborhood Association serves about 270 homes with an active slate of social and other activities, including an annual garage sale, park clean up, Easter Egg Hunt, 4th of July bike parade and picnic, Halloween event and holiday dinner. The primary purpose of the neighborhood association is to provide community enjoyment, to generate a spirit of community among neighborhood residents and to promote awareness of this unique neighborhood surrounded by a lake, golf course and wildlife preserve. Contact CPNA President Jeni Hanser at 242-8819.

### 6. East Bluff

Formed in the early 70's as Wisconsin's first condominium association, serving 176 units (450 residents), East Bluff is at the intersection of Northport Drive and North Sherman Avenue. Residents enjoy Rhythm and Booms, Madison Mallards games, and the multi-faceted Warner Park just across the street. Major goals for 2007 include continuing to ensure that East Bluff provides attractive, safe, and affordable homes for Northside families. Contact Fernando Cano Ospina, President at 444-1626.

*Neighborhood Profiles cont. on next page*

### GET INVOLVED!

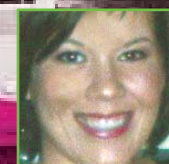
*If you live in an area without a neighborhood association and you would like to form one, call the Northside Planning Council at 661-0060.*

*"You don't have to move to live in a better neighborhood - just get involved in the one you're in!"*

**SERENITY SALON AND DAY SPA • 246-2002**

**DARE TO BE YOU**

- Hair Design
- Hair Coloring
- Hair Texturing
- Hair Removal
- Skin Care
- Body Treatments
- Massage
- Nail Care
- Conditioning Treatments



**Andrea,**  
a Master Designer  
and Aveda  
Haircutting Coach.



**Tania,**  
Advanced Designer,  
Skin Care Specialist.

[madisonserenitysalonanddayspa.com](http://madisonserenitysalonanddayspa.com)

Northside TownCenter

**NORTHSIDE NEIGHBORHOOD ASSOCIATION GUIDE**

**Neighborhood Spotlight**

# Berkley Oaks



Serving 203 single family homes, a mobile home community and 21 apartment buildings, the Berkley Oaks Neighborhood Association (BONA), established in 1996 by Anita Lightfoot, was reestablished in 2006 by Willy Holden. Soon after moving into Berkley Oaks with his wife Valerie and two children, Willy recognized the underutilization of Berkley Park and wondered, "Who are my neighbors? What's going on in the neighborhood?" Willy credits *Northside News* and Northside Planning Council in providing resources to assist reestablishing BONA.

"The Northside Planning Council offered me leadership training in the Leadership Circle program and referred me as a developing leader to the Grassroots Leadership College," Willy said. He also co-presented "Starting a Neighborhood Association: The First Steps" at the 2006 Neighborhoods Conference.

BONA's vice-president, Lydia Maurer. Lydia's involvement began with a flier announcing BONA's first

2006 meeting. "I attended the meeting and, immediately, I was hooked. By hosting the meeting in their lovely home, offering delicious food and an unhurried agenda, Willy and Valerie set the stage for success by welcoming everyone, easing us into introductions and establishing BONA's rapport of comfort, courtesy and community," said Lydia.

BONA's efforts led to improved hours and lighting at Berkley Park and membership in the Dane County Time Bank. Goals for 2007 are to further enhance the community by adding perennials and permanent picnic tables to Berkley Park, attractively landscaping a traffic triangle and advocating for the installation of two traffic islands on Tennyson Lane. BONA plans to host an annual neighborhood picnic and Earth Day activities. Membership is extended to all residents, businesses, community organizations and landlords within Berkley Oaks. BONA's quarterly meetings will be held at Pierce's Northside Market.

Contact Willy Holden by e-mail at [valwilly@charter.net](mailto:valwilly@charter.net) or by phone at 444-9854.

## 7. Kennedy Heights

Formed in 1983, Kennedy Heights was the first Northside neighborhood to develop a community center. The center offers a full range of programs including, a city accredited early childhood program, an after school program, a youth program, a girl neighborhood power program, adult activities that include a women's group and cultural activities and an Asian outreach program that includes parenting classes for the numerous Southeast Asian families living in the neighborhood. The Center host community building events throughout the year and has numerous volunteer opportunities. In 2007 the community center is trying to purchase a "new" used 15 passenger van. Contact Alyssa Kenney at 244-0767 for more information.

## 8. Lake View Hill

Formed in the mid-1980s, the association has always acted as a guardian of the beautiful green spaces of Lake View Hill. After a period of dormancy, the association was reactivated in 2003. Activities include a neighborhood directory, spring plant sale, summer picnic, and regular meetings with potlucks and speakers. Contact Annette Eisman at 244-2055 for more information.

## 9. Lerdahl Park

Formed in 1996 in response to the threatened development of the Troy Gardens property and to the challenges at Mendota Elementary, Lerdahl Park includes about 275 households. The association is currently inactive. Contact the NPC office at 661-0060 if you are interested in getting involved.

## 10. Lindbergh

The Lindbergh area is considered at large and is not organized as a Neighborhood association at this time. If you are interested in getting involved, contact the NPC office at 661-0060.

## 11. Maple Bluff

The Village of Maple Bluff, population 1,350, occupies a narrow band on the northeast shoreline of Lake Mendota where Winnebago Indians once had their summer encampments. Annual village events include the Father's Day Parade, Fourth of July Parade and Fireworks, Garage Sale, Holiday Tree Lighting and Winterfest. The Maple Bluff neighborhood has been involved with broader Northside issues and is a member of the Northside Planning Council. Youth sailing classes are available at Marina Park - for scholarship info contact the recreation department. Contact Village Administrator Tim Krueger at 244-3048 or NPC representative Laura Vogel at 244-7187.

## 12. Maple Wood

Last year, Maple Wood held its sixth annual garage sale in June and annual picnic in September. This year, we will continue updating our buildings by installing vinyl siding on all of the buildings. Contact the NPC office at 661-0060 if you are interested in getting involved.

## 13. Mendota Hills

Formed in 1994, this association serves 150 homes west of Warner Park. Activities include an annual neighborhood picnic, neighborhood garage sale, a spring plant exchange and neighborhood directory. Contact Bob Paolino at 249-7126.

## 14. Nobel Park

The Nobel Park neighborhood association was established in 2003. The area covers the triangle that runs from the corner of School Road and Troy Drive to the corner of School Road and Northport Drive and connects at the corners of Troy and Northport. The goal is to have more active participation so residents can all get to know their neighbors better. Contact Daniel O'Kane at 241-8081 or [dwljo@charter.net](mailto:dwljo@charter.net)

## 15. North Lake Mendota

Formed in 1978 to protect the wetlands west of Mendota Health Center, the association has grown to serve over 300 homes. Meadow Ridge Park now has a playground set and there is a wooded space and hiking trail to connect it with Westport Meadows Park. An area has also been set aside for field-type sports for the neighborhood children. The association has established a retention pond park of storm water management and a wildflower and aquatic species area. Two neighborhood signs grace the entrances to the neighborhood from grants received through the City of Madison. Currently the association has reached an agreement with Mendota Mental Health Institute to do an annual Deer Harvest. It will continue to work with the city to develop Meadowridge Park, as well as sponsoring events that will allow the members of the neighborhood opportunities to interact. Contact Dan Hovey at 669-0809.

## 16. Northport Apartments

Northport Community Learning Center was built in 1995 and is part of the Northport Apartments, a low-income housing of 140 units. The learning center provides resources and tools to residents

**Neighborhood Profiles**  
cont. on next page

**Saturday  
April 21  
Noon - 4 p.m.**

Join us for earth friendly booths, food, and refreshments

**Habitat ReStore**  
208 Cottage Grove Rd.  
Madison, WI

[www.restoredane.org](http://www.restoredane.org)

celebrate earth day  
at the  
Habitat ReStore

*Building or remodeling your home this year?*

*Need indoor or outdoor projects completed this spring? Guaranteed expert quality at affordable rates.*

**Gartner Home Improvement & Landscaping**

× Gutters	× All Flooring	× Painting & Staining
× Siding	× Remodeling	× Fences & Decks
× Carpentry	× Minor Plumbing	× Drywall & Repairs
× Roofing	× Landscaping	× Electrical
× Concrete	× Excavating	Too many jobs to list!

**25 years experience**

- × Sealcoat & Hot Asphalt
- × Driveway & Parking Lot Maintenance
- × Hot Tar Crack Sealing

<ul style="list-style-type: none"> <li>× Restoration to New Construction</li> <li>× Commercial &amp; Residential Work</li> <li>× Insurance Claims</li> <li>× Flood, Fire, Wind &amp; Hail Damages</li> <li>× FEMA Experienced</li> </ul>	
--	--

**Check out some of my work samples at Northside TownCenter.**

Thank you to all my clients!

*Senior citizen discounts.*

*Call your Northside native of 40 years!*

**Mark Gartner**  
(608) 249-5243 (608) 446-4804

## NORTHSIDE NEIGHBORHOOD ASSOCIATION GUIDE

**Special  
Pull-Out  
Section**  
save for  
future reference

to pursue their educational, career and personal goals and mainly focuses on employment and education. The following services are provided to residents and Northside residents: Head Start, Even Start Program, M.A.T.C (English classes and adult education), UW-Hmong Literacy, Language, and Jobs Project (English classes and job skills), Career Development Center, Turning Point (East H.S. Alternative Learning Program), After School Program, Computer Lab, ScholarShop, ScholarShop Jr., PEOPLE Prep, Scholarship Program (residents only) Summer Program, Teens' Time, Food Pantry and Monthly Community Dinner. For more information, contact Pat Steele at 513-9666.

### 17. Packer Townhouses

The management and owners created the Community Learning Centers so the residents and management can work together in creating programs and offer services from these two learning centers. The computer labs expanded and grew to include high-end graphic art, animation and video software and equipment. A wide variety of programs and services is offered, including: Head Start; Even Start Program, Adult Basic Education and English as a Second Language class; homework assistance; Career Development, PEOPLE Preparatory Program; ScholarShop, ScholarShop Jr., technology training; summer enrichment activities for youth; and a transitional alternative high school program run by MMSD during the day. Contact Jacki Thomas (Packer, 249-0160) for more information.

### 18. Sheridan Triangle

Sheridan Triangle Neighborhood Association (STNA) represents 220 households in the area west of N. Sherman Avenue, south of McPherson, north of Steensland, and bounded on the west by Sheridan Drive. The association's mission is to inform and represent neighbors in any events and plans affecting our neighborhood and to promote a welcoming environment for everyone. The NA adopted the Sheridan Triangle Park and raised funds to purchase new, safer playground equipment. They also maintain two gardens in the park, the Daisy Patch and Nanna Peterson native woodland wildflower garden. An annual neighborhood picnic in August is popular. The STNA, which meets quarterly, also publishes a quarterly newsletter, *The Triangular*. Contact President Sherri Shokler at 301-0191.

### 19. Sherman

Reorganized in 1997, the Sherman Neighborhood Association is open to anyone who lives and/or operates a business in

the area bounded by Northport Drive, Packers Avenue, Sherman Avenue, Commercial Avenue and Superior Street, Michigan Court, Erie Court and Northfield Place. The association meets monthly. The newsletter, *Sherman Neighborhood News*, is published 4-6 times a year. Our activities in the past year included a spring neighborhood cleanup, a meeting about neighborhood crime issues, a spring garage sale, a fall potluck/cookout and a winter potluck. New members are always welcome. Check out the website at [www.geocities.com/shermanneighborhood](http://www.geocities.com/shermanneighborhood) or contact Chair Michael Jelinek at 245-9842 or [sher-  
manna.chair@yahoo.com](mailto:shermanna.chair@yahoo.com)

### 20. Sherman Village

The Sherman Village Association is currently inactive. Its boundaries include Wheeler Rd on the north; N. Sherman Ave on the east; Mayfield, Esch, Iowa, Havey on the south; and School Rd. on the west. The purpose of the association includes enhancing the quality life for its residents and provide leadership on neighborhood issues. Contact the NPC office at 661-0060 if you'd like to get involved.

### 21. Troy Gardens

The people who represent the 30 new homes of Troy Gardens Community Association bring their love of the land and community to the thriving Northside! Last fall saw the beginning of occupancy in the new development on the southeast corner of the 26-acre Troy Gardens Conservancy. The people of the new neighborhood will immediately focus on defining their place in the greater Northside community. Their governing group has just begun to form. They look forward to working with the Friends of Troy Gardens in their shared interests of gardening, land conservation, and educational goals of healthy land means healthy people.

### 22. Vera Court

Started in the early 1990s, the association was the catalyst for revitalization of the neighborhood, working closely with Future Madison Inc. to rehabilitate the apartment complex and construct the Vera Court Neighborhood Center, built in 1995.

Contact Benito Juarez Olivas at 957-6652.

### 23. Woodland Park

Residents from Woodland Park and Woodlands reformed their tenant association in 2006. The group hopes to make their neighborhood safer, and is working with community groups to offer programs and classes. Contact Co-president Mary Hopkins at 242-1238.

### 24. Woodlands

Residents from the Woodlands and Woodland Park Apartments reformed their association in 2006. The group hopes to have cookouts and cleanups this spring and summer, as well as a neighborhood watch. Contact Co-president Marie Holloway at 467-6434.

### 25. Whitetail Ridge

Originally organized in 1998, this association includes homes north of Mayfield Lane/Pond Street and south of Wheeler Road, between Packers and Sherman Avenues. The association will be focusing this year on developing more community leadership and involvement as a way to be successful in the present and sustainable into the future. The association is monitoring key land use projects, including the Cherokee Park, Inc. development that borders the northern edge of the neighborhood. The group is currently working to identify its key concerns in order to build momentum for future action. Anyone interested in learning more about this association or taking a more active role in its development may contact Shelley Legried (President) at 242-0139.

## Organization Profiles

### East Attendance Area PTO Coalition

Originally the Northside PTO/A Coalition, the East Attendance Area PTO Coalition expanded and is now open to representation from all East High feeder

### Friends of Troy Gardens

Troy Gardens is a 25-acre green space along the 500 block of Troy Drive. The Friends of Troy Gardens (FTG) manages this land and runs several programs, including an organic Community Supported Agriculture Farm, the largest Community Gardens in Madison and natural areas stewarded mainly by community volunteers. FTG offers educational programs for people of all ages, most notably through Troy Kids' Garden and Farm & Field Youth Training Program. FTG is a membership organization dedicated to community participation. A Northside Festival, Savor The Summer at Troy Gardens, will be held rain or shine on Sat. Aug. 11. This event is free and open to the

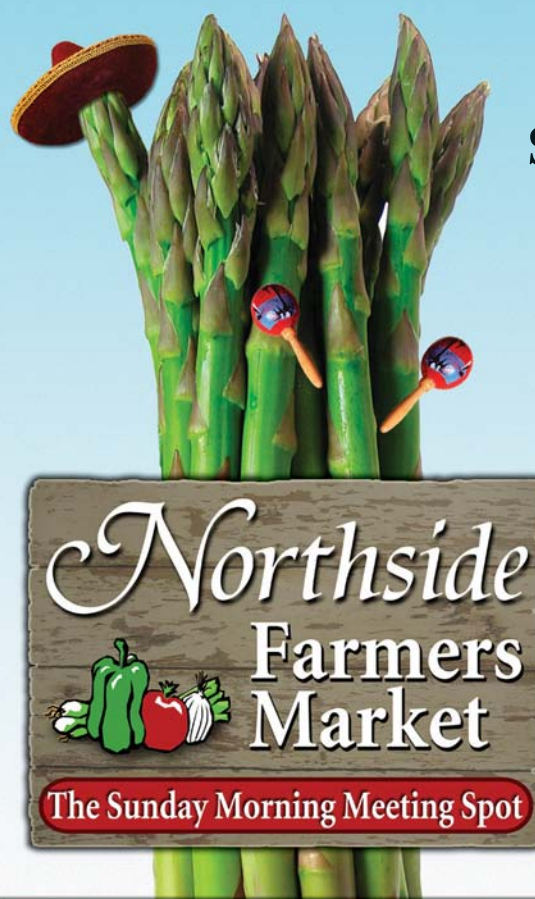
**Organization Profiles  
cont. on next page**

# The First Market is Sunday, May 6!

**Live Cinco de Mayo entertainment!**

**Traditional Mexican foods for sale!**

**Kids - plant a seedling for Mother's Day!**



**Make it Your  
Sunday Morning  
Meeting Spot!**

Local vendors!

Fresh produce, meats,  
organic foods, baked goods  
and more!

Delicious food!

Community tent for  
socializing with your  
Northside Neighbors!

Visit our website at  
[NorthsideFarmersMarket.org](http://NorthsideFarmersMarket.org)

## Using Your Home's Equity is a Winning Idea!

Especially with a Madison Credit Union  
**Fee-Free\* Home Equity Loan.**

Bring this ad to any Madison Credit Union office  
by May 18, 2007, and we'll waive the loan fees!\*

**Plus, you'll receive the following benefits:**

- **Lower Interest Rates.** You'll get a lower interest rate than with other types of loans.
- **Longer Repayment Terms.** Your monthly payments may be considerably lower and more manageable than with other loans.
- **Tax Deductibility.** You may be able to deduct your interest payments on loans of up to \$100,000.\*\*



949 East Washington Avenue • Madison, WI 53703-2945 • (608) 266-4750 • [www.madisoncu.com](http://www.madisoncu.com)

\*Fee-Free (fees up to \$80) once per 12 months. New money only.  
\*\*See your tax advisor for details on the deductibility  
of interest from loans secured by your home.

**Shop the Northside Farmers Market Every Sunday Morning!**  
8:30am - 12:30pm May 6 - Oct 21 Northside Town Center across from Warner Park

**Special  
Pull-Out  
Section**

save for  
future reference

**NORTHSIDE NEIGHBORHOOD ASSOCIATION GUIDE**

public. Email FTG at [info@troygardens.org](mailto:info@troygardens.org), call 240-0409 or visit [www.troygardens.org](http://www.troygardens.org)

**Lakeview Lutheran Church**

Lakeview Lutheran Church has been a member of NPC since early 2002. The Church is an active member of the Northside community, hosting events such as Family Place North, Annual Health Fairs and the famous Lutefisk dinner. Over the last year, several groups traveled to Hurricane Katrina-ravaged areas for volunteer work, and in 2007 the church aims to provide inclusivity and hospitality for all. The church is located at the corner of Northport and Mandrake. Contact Pastor Dean Kirst at 244-6181 or [pastorlkview@charterinternet.com](mailto:pastorlkview@charterinternet.com)

**Northside Business Association**

The business association promotes Northside businesses and well-planned, high-quality growth that enhance Northside resident's quality of life. The association's input aided the Aberg Avenue reconstruction and did a coordinated fundraiser for the Lakeview Public library. Monthly dinner meetings provide information to members. A summer outing and holiday event dinner helps build a stronger Northside business identity. The association wants to increase its membership and marketing. Contact Julie Savidusky at 255-5191 or visit NBA's website at [www.madisonnba.com](http://www.madisonnba.com)

**North/Eastside Senior Coalition (NESCO)**

North/Eastside Senior Coalition (NESCO) is a non-profit organization, serving adults age 55 and older living in the North/Eastside of Madison and surrounding areas in Dane County. Mission: to enhance the quality of life for all senior adults by providing programs, advocacy, and resources that assist them to remain independent, active, and influential in the community. Vision: seniors dedicated to building a better community for people of all ages and backgrounds. Programs: nutritional lunch, volunteering, intergenerational, cultural diversity (Latino & African American), English & Spanish case management. Contact: 1625 Northport Dr. #125, Madison, WI 53704, 243-5252 (Warner Park Community Recreation Center); [www.nescoinc.org](http://www.nescoinc.org)

**Friends of Cherokee Marsh and Upper Yahara Watershed**

The Friends of Cherokee Marsh and Upper Yahara Watershed works to protect, preserve and restore the beauty, value and health of Cherokee Marsh and the upper Yahara River watershed. Public natural areas in the watershed include Madison's Cherokee Marsh Conservation Park, Dane County's Yahara Heights/Cherokee Marsh Natural Resource Site, and the DNR's Cherokee Marsh Fishery Area. Anyone interested in the marsh and local watershed issues is welcome to participate in the group. For news about meetings and other activities, visit [www.cherokeemarsh.org](http://www.cherokeemarsh.org)

**Friends of Lake View Hill Park**

The Friends exist to support the forthcoming Dane County Parks master plan for Lake View Hill Park. Mostly a permanent conservancy, the park's 48.3 acres also host the former Lake View Sanatorium's buildings (1930-1966). Located on Madison's beautiful Northside, the park features trails; the "Great Lawn" invites kite flying and sledding. With spectacular views from Madison's highest elevation at 990 feet, probably here young John Muir looked back on his UW-Madison campus before journeying on to become an environmental legend. The non-profit Friends invite community participation in environmental events, including Clean Up the Hill Day (Saturday before Earth Day). Contact Nelson Eisman, Board Secretary, at 244-2055 or [neisman@yahoo.com](mailto:neisman@yahoo.com)

**Dane County Timebank**

The Dane County Timebank is an organization of 400 individuals and approximately 40 organizations that connect in an equal relationship to exchange resources while building community. An hour spent doing something for someone in the community nets a timedollar. That timedollar can be spent on services anyone else in the Timebank is offering. The program was piloted on the Northside in October of 2005. Surpassing its goal of 100 members in a year's time, the Timebank has also successfully established a Youth Court in the East attendance area, and is working on a prisoner re-entry component to the program. For information or to join, call 663-0400 or go to [www.danecountytimebank.org](http://www.danecountytimebank.org)

**Circle of Friends**

The Warner Park Community Recreation Circle of Friends (COF) was formed to insure the WPCRC continues to grow and serve the community. By having the Madison Parks Foundation as the fiscal agent all donations are tax deductible. Membership in the COF is open to all residents that support the WPCRC. Board members are selected from COF members that have volunteered to help and have the time required to be on a working board. Currently COF is working on raising public awareness to generate funds for a pool at WPCRC. Contact Dorothy Borchardt at 249-7202 or visit [www.wpcrcfriends.com](http://www.wpcrcfriends.com)

**Northside Community Council**

This organization was formed in 1968 residents to get together to promote issues and activities on the North side. Activities included the Family Fun Fest on July 4 and an Easter Egg Hunt. With funds raised from the Family Fun Fest and now the Bingo tent at Rhythm and Booms, the committee has been able to donate to schools, community centers, scouts and other group more than \$70,000. Today, the members of the group still hold the Easter Egg Hunt, a bike parade/pinata party and the bingo tent at Rhythm and Booms, and continue to donate to organizations. This is a small group and would appreciate more volunteers. For more information, please call Sue Morrison at 241-1986.

**"You don't have to move to live in a better neighborhood - just get involved in the one you're in!"**

**Professional ~ Competent ~ Knowledgeable**



**Monika Ramsey**  
CRS. GRI. ABR  
608.219.8907

**Nancy Tidwell-Rasmussen**  
CRS, GRI  
608.219.8910



**We sell Quality of Life. We don't just sell Real Estate.**

---

■ remodeling ■ design/build ■ historic preservation ■ custom cabinetry

**tdscustomconstruction.com**  
**251.1814**



**CUSTOM CONSTRUCTION**

1431 Northern Ct.  
Madison 53703

**NORTHSIDE ELECTRIC**  
Quality • Dependable

**Electrical needs?**  
Call your neighborhood electrician!  
No job too small!  
Cross off your "honey-do" list!

Free estimates  
Senior citizen discounts

**Mark**  
State Certified Master Electrician, Licensed & Insured  
cell **212.1552** office **249.3373**  
Northside resident for over 35 years

- ↪ Service upgrades
- ↪ Panel changes
- ↪ Code violations
- ↪ Hot tubs
- ↪ Furnaces
- ↪ Ceiling fans
- ↪ Remodeling
- ↪ Kitchens
- ↪ Bathrooms
- ↪ Air conditioning
- ↪ Phone
- ↪ Cable TV
- ↪ Computer wiring

**NORTHPORT SHELL STATION**

Gas Available  
**24 Hours**  
with Credit Card



1423 Northport Dr • Madison WI • 241-0777

**Save money with Shell gas!**

Many customers state they get 2-5 more mpg with Shell gas because Shell does not use ethanol. Pure gas burns more efficiently, so your car runs smoother and goes farther on one tank of gas.

A 20 gallon tank gets 4 more mpg with Shell gas. That's 80 extra miles out of every tank! You save \$10 each fill up because your gas goes farther. If you fill your car once a week, you save over \$500 per year.

Try Shell gas and experience the difference!

**Full service gas is available! Outside windows washed and tire pressure and, fluids checked!**  
*An extra charge is added for full service.*



Andy is ASE Certified and has served the Northside community for over 15 years. Come see Andy for all your service needs.

Monday - Friday  
6:30am - 7pm  
Saturday  
7am - 4pm  
Sunday  
9am-3pm

1423 Northport Dr. **241-0777**